

CERTIFIED LAND CORNER RECORDATION

DESCRIPTION OF CORNER EVIDENCE FOUND, AND ORIGINAL RECORD (if known)

LOCATION

Found 60 D spike @ centerline intersection of roads.

$\frac{4}{9}$ | $\frac{3}{10}$

T 12 N, R 62 W
6th P.M.

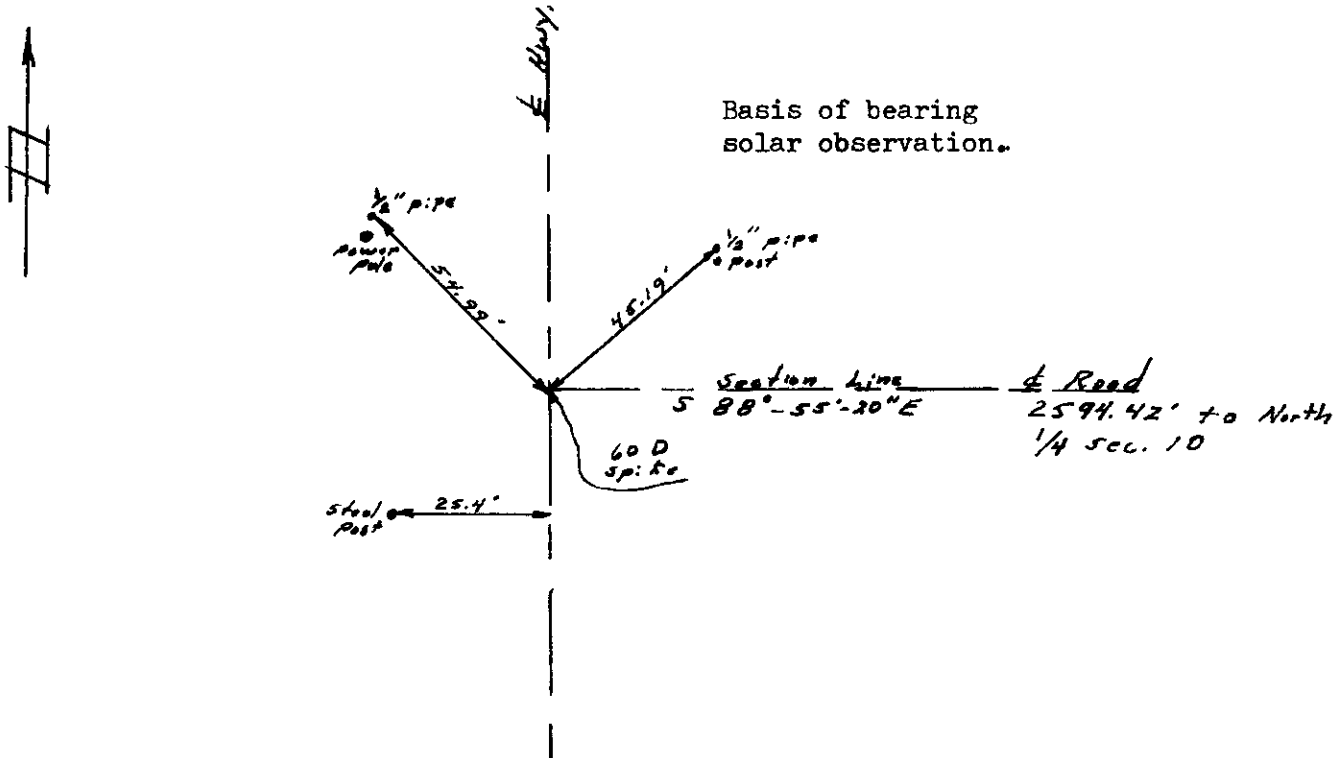
G.L.O. record - Brass cap monument.

DESCRIPTION OF MONUMENT AND ACCESSORIES ESTABLISHED TO PERPETUATE THE ORIGINAL LOCATION OF THIS CORNER:

Left corner as found.

Set 1/2" pipe for witness corners to the northwest and northeast.
See sketch.

SKETCH, WITH COURSE AND DISTANCE TO ADJACENT CORNER IF DETERMINED IN THIS SURVEY.
(May Sketch or Paste Reproduction on Reverse Side.)



I, Robert C. Corbet certify that I have carefully performed or reviewed the work done on the diagrammed corner as reported on this recordation form and approve the same.

Robert C. Corbet
Signature of Surveyor

LS 495
Registration No.

STATE OF WYOMING,
Office of Clerk and Recorder,
County of Saramie

This "corner record" was filed for record on the 6 day of January, 1975, was noted on the cross-index plat and is assigned page No. _____, in book No. _____.

James C. Whitehead
County Official

Cross Index No. <u>E13</u>	T. <u>12</u>	R. <u>62</u>	<u>6</u> Mer.
_____	T. _____	R. _____	Mer.
_____	T. _____	R. _____	Mer.
_____	T. _____	R. _____	Mer.
_____	T. _____	R. _____	Mer.
_____	T. _____	R. _____	Mer.
_____	T. _____	R. _____	Mer.

Photographed

Indexed

Posted

Assessor

The State of Wyoming
County of Laramie

This instrument was filed for record
at 12th o'clock P. M. on the
6 day of January

A. D. 1915 and duly recorded in
Book on page

John C. Mitchell

County Clerk & Ex-Officio Registrar of Deeds
By [Signature] Deputy

